

Contemporary Home on Nearly a Half Acre

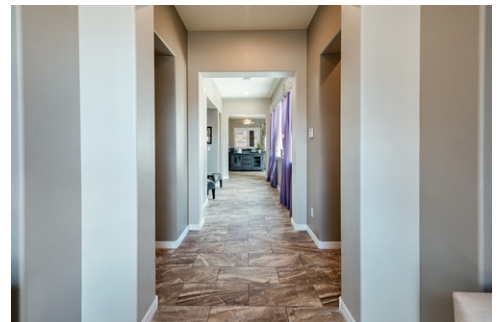


\$ 569,400



8624 Purple Wisteria, Las Vegas, NV 89131

- » Beds: 3 | Baths: 2 Full, 1 Half
- » MLS #: 2215473
- » Single Family | 2,655 ft² | Lot: 20,038 ft²
- » RV Parking, Sport Court, Room for Pool
- » Modern Rectangle Tile
- » More Info: 8624PurpleWisteria.com



Team Carver

BS.39338

(702) 525-3658

Clients@teamcarver.com

<http://www.teamcarver.com>

**BERKSHIRE
HATHAWAY** | **NEVADA
PROPERTIES**
HOMESERVICES

Nevada Properties
3185 St. Rose Parkway
Suite 100
Henderson, NV 89052
(702) 525-3658

Contemporary home sitting on a large acreage home site in the desirable gated community of The Crossings. This .46-acre corner lot offers flexibility suiting many needs including RV parking area, no rear neighbors, 40-foot covered patio, sport court, garden, and firepit. Amazing attention to detail and first-class craftsmanship are apparent throughout this semi-custom William Lyon home. Inviting curb appeal enhanced with manicured landscapes, paver stone driveway, stone accents, and a plus sized 12 foot iron RV gate. Loaded glass front door leads to a grand entry featuring a 10

NRED BS.39338.

©Properties Online, INC. The above information including square footage is deemed reliable but has not been independently verified and cannot be guaranteed. BHH Affiliates, LLC. An independently owned and operated franchisee of BHH Affiliates, LLC. Berkshire Hathaway HomeServices and the Berkshire Hathaway HomeServices symbol are registered service marks of HomeServices of America, Inc.® Equal Housing Opportunity. Information not verified or guaranteed. If your home is currently listed

